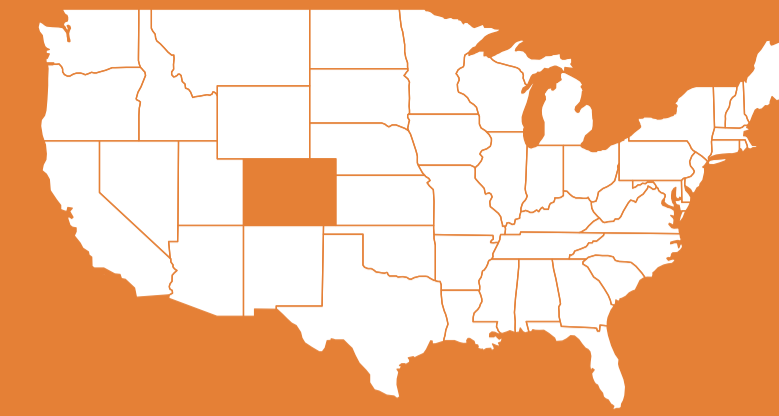


TELEHEALTH IN COLORADO 2019-2021

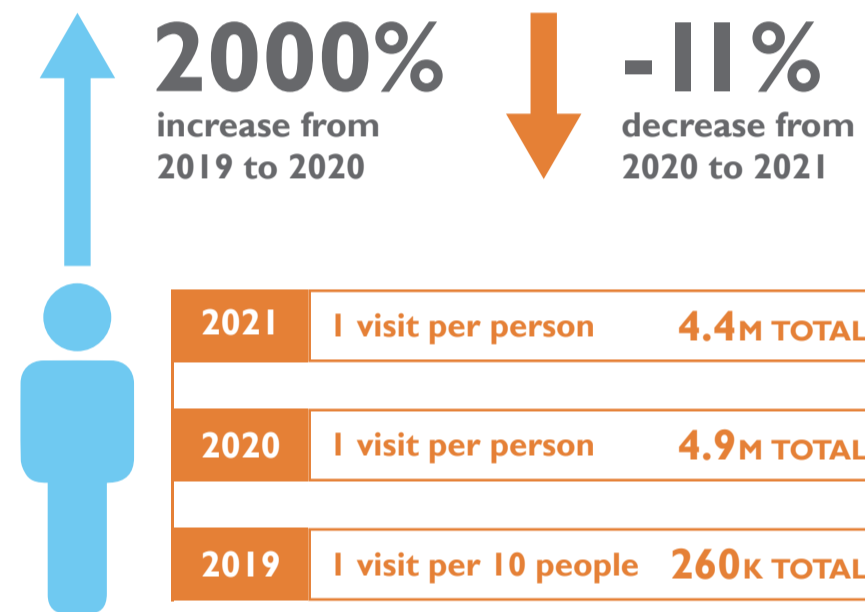
The onset of COVID-19 in early 2020 resulted in immediate changes in policies that enabled the expanded use of telehealth in Colorado. This infographic shows the trends in telehealth use pre- and post-pandemic. For the full interactive Telehealth Services Analysis, including more information on demographic and geographic variation, visit our website at civhc.org.



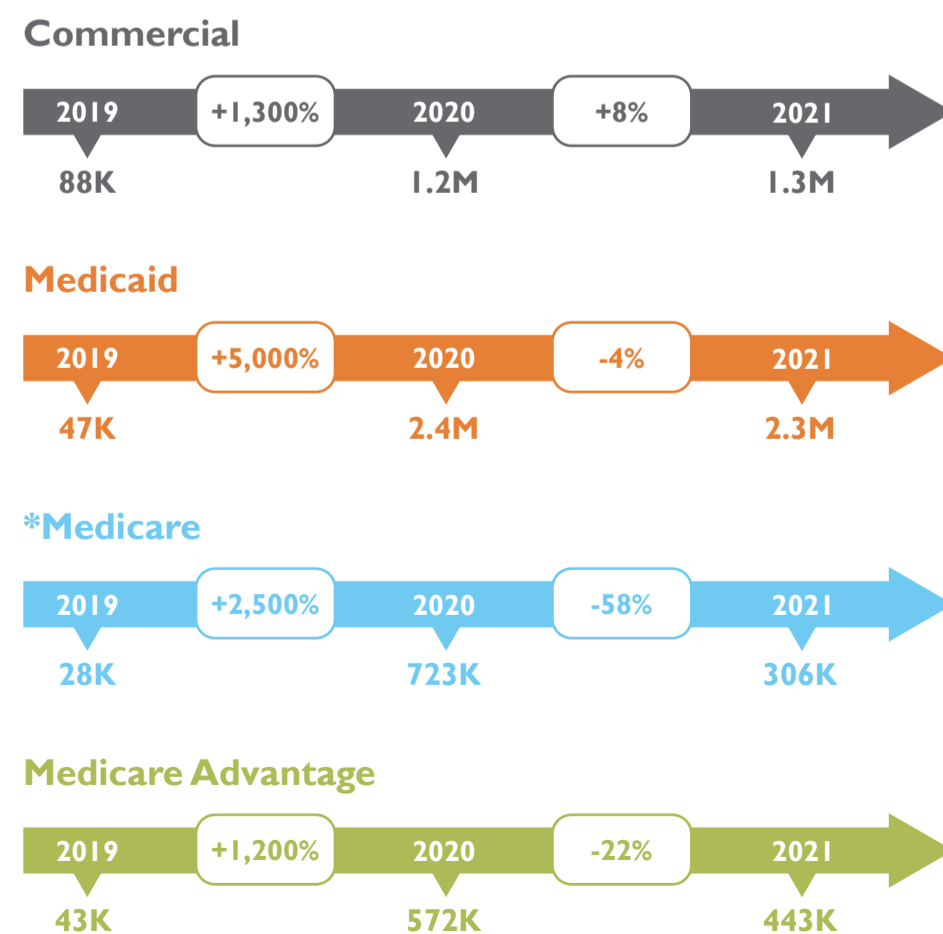
COLORADO ALL PAYER CLAIMS DATABASE

UTILIZATION

Number of telehealth visits increased post pandemic and still remain high

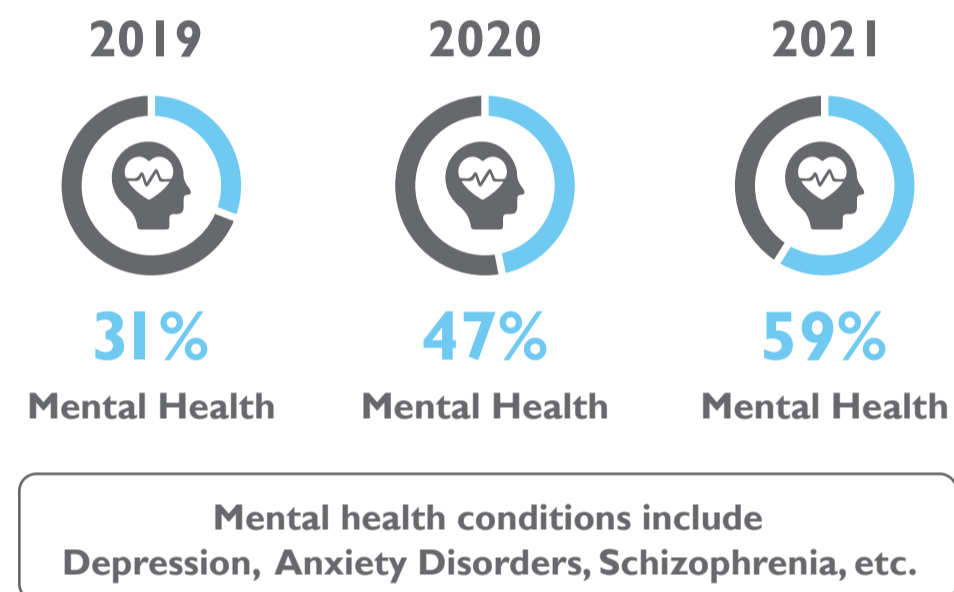


Telehealth Medicaid visits increased the most across all payers from 2019-2020

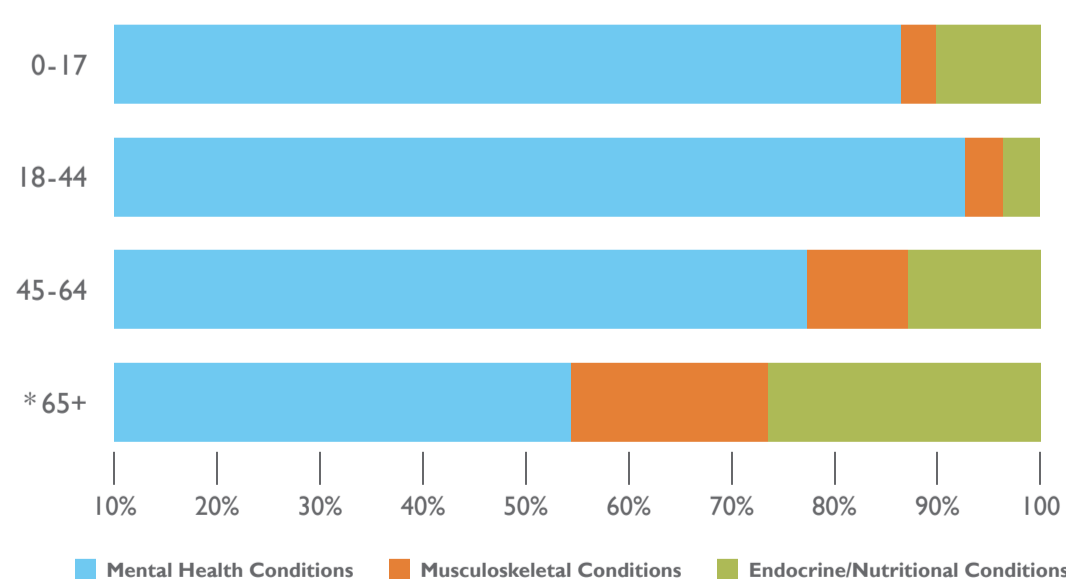


DIAGNOSES

Mental health is the top telehealth diagnosis category for all years and increased in both 2020 and 2021



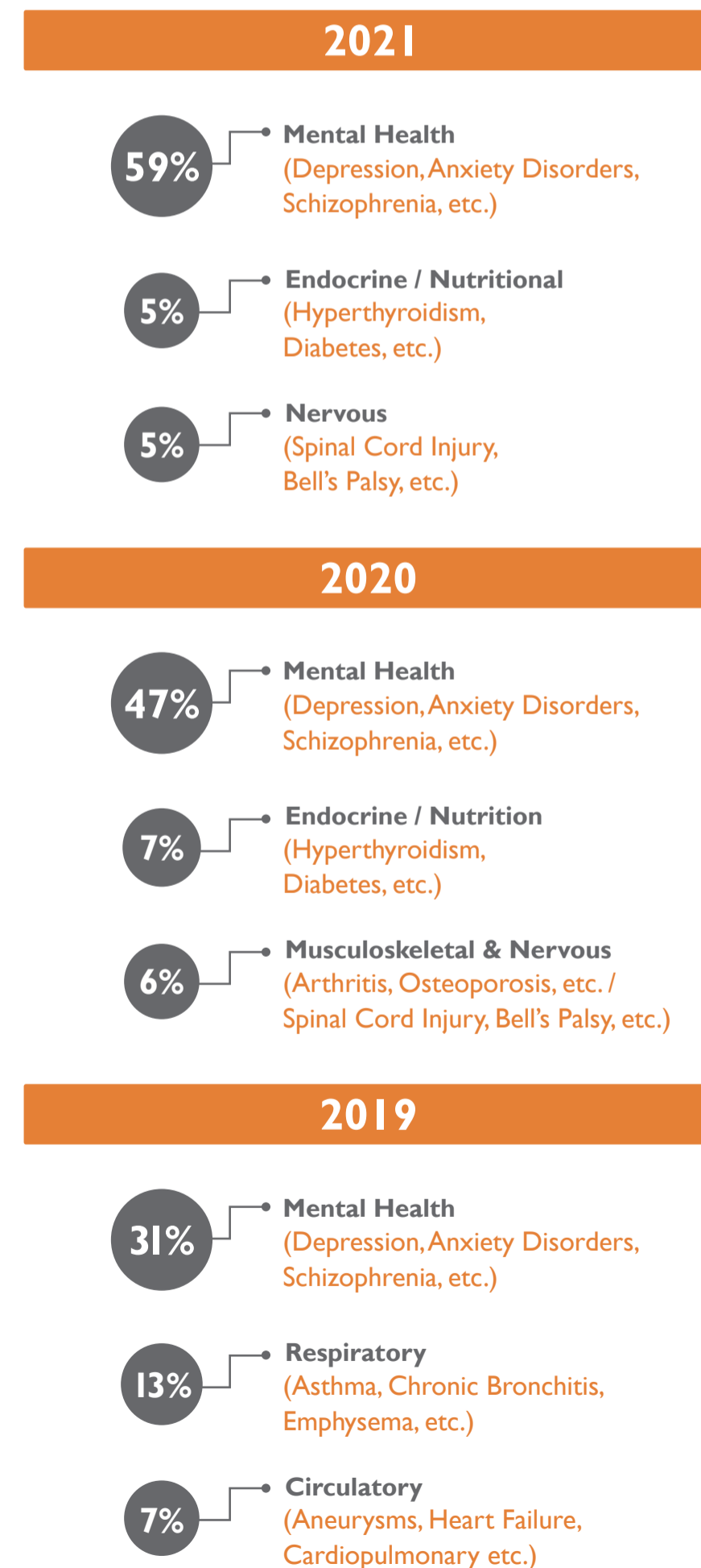
For all age groups except people over 65 and older, 75% of all telehealth visits were for mental health



* Medicare FFS data for 2021 is incomplete and includes claims through June only. For more information or to view the full Telehealth Services Analysis, visit us at: www.civhc.org

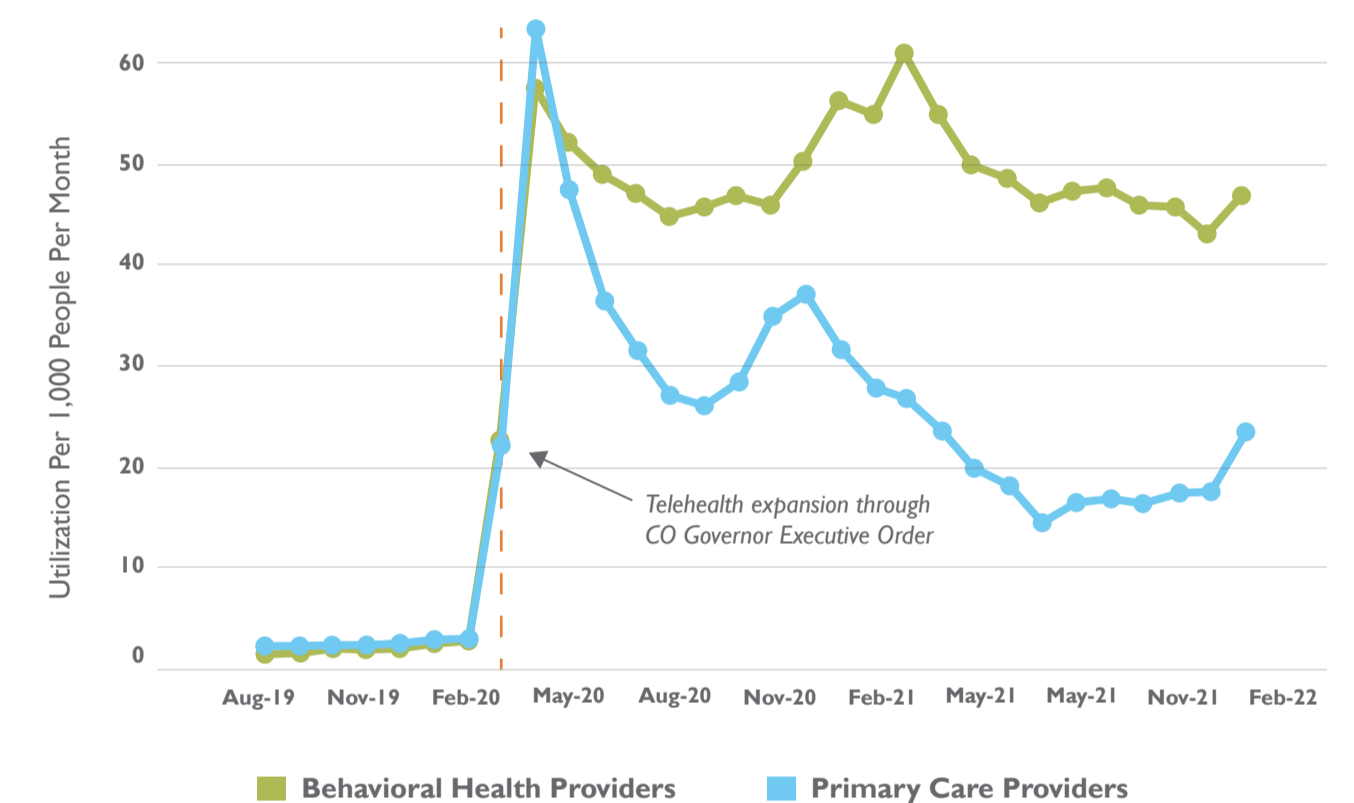


With the exception of mental health, the top telehealth diagnoses categories per year have changed



PROVIDER TYPES

Telehealth visits with behavioral health providers have remained high while visits with primary care providers have dropped more



In 2020 and 2021 behavioral health providers saw the highest percentage of patients via telehealth compared to 2019

