

Ryan Van Wert, MD  
[ryan@vyncahealth.com](mailto:ryan@vyncahealth.com)

**VYNCA**  
Advance Care Planning Solution

# Our Vision

---

To ensure that care preferences are captured, accessible and honored for all persons at the end of life.

# The State of Advance Care Planning

## THE WALL STREET JOURNAL.

POLITICS AND POLICY

### End-of-Life Care in U.S. Is Lacking, Report Says

Conversations About Dying Should be Held Throughout Life To Save Costs, Improve Care

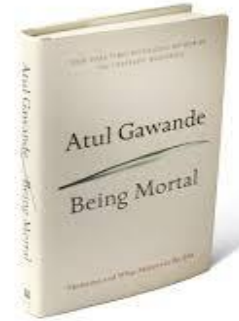
By STEPHANIE ARMOUR

Sept. 17, 2014 8:04 p.m. ET

SCIENCE

### Panel Urges Overhauling Health Care at End of Life

By PAN BELLIACK | SEPT. 17, 2014



POLITICO

### End-of-life instructions find no place in electronic health records

By JACARNE KEMENY | PHOTO BY GETTY IMAGES



# I saved an old man's life. He didn't want it.

People are choosing to die in their beds over a hospital

*The Patients Were Saved. That's Why the Families Are Suing.*

## Barbara Bush's End-Of-Life Decision Stirs Debate Over 'Comfort Care'

# Components Needed for Successful Advance Care Planning

---

Provide consistent, high quality end of life care

## ENGAGE



- Engagement in ACP conversations
- ACP content for clinicians and patients
  - Video
  - Literature
  - Guides

## CAPTURE



- Electronically capture accurate care plans
- Ensures high quality
- Eliminates errors

## ACCESS



- Single source of truth for care preferences
- Connects all care settings
- Patient and family member access

## HONOR



- Clinically integrated at the point of care
- Promotes shared decision making

# Case Study: Standardize ePOLST Across a Health System

---

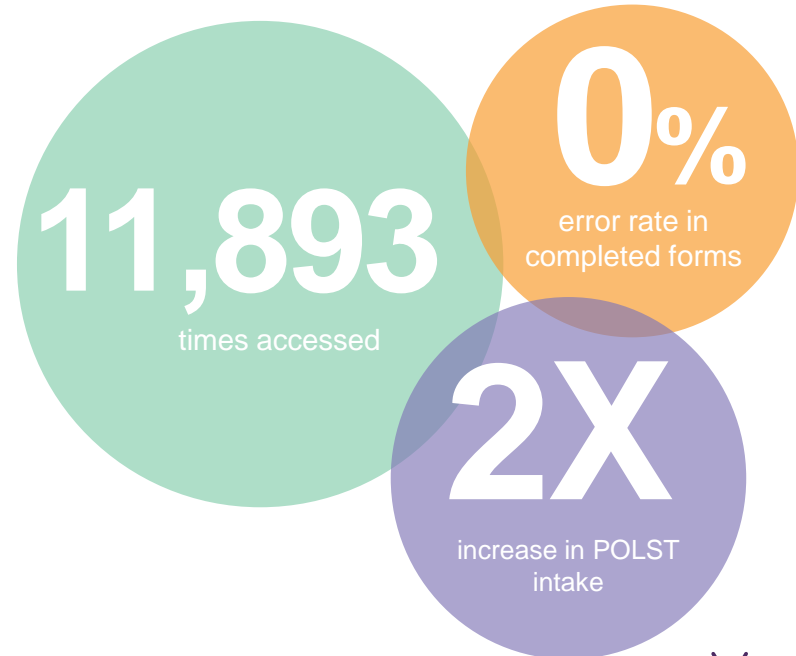
## ORGANIZATION:

- Oregon Health and Science University
- 528 Beds<sup>[1]</sup>
- 30,188 hospital admissions<sup>[1]</sup>

## VYNCA IMPLEMENTATION:

- Back-loaded 9,848 POLST forms available upon launch
- Trained clinical staff and instituted standard processes
- Integrated within EHR clinical workflow

## IMPACT (First 6 months)



# Case Study: Vynca Impact Across Multiple Health Systems

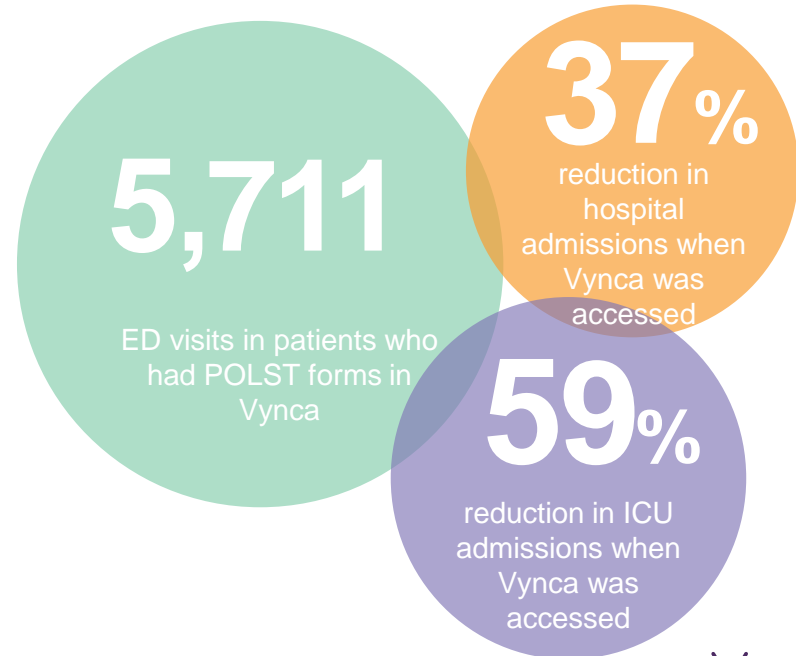
## BACKGROUND:

- Review of all health systems using Vynca
- 5,711 ED visits analyzed from April 2015 – July 2017

## ADMISSIONS:

- Hospital admission rate
  - 40% when Vynca was not accessed
  - 25% when Vynca was accessed
- ICU admission rate
  - 9% when Vynca was not accessed
  - 3.7% when Vynca was accessed

## IMPACT (April 2015 – July 2017)



---

What is needed for a successful state registry?

# Technology

## Key components of a statewide registry

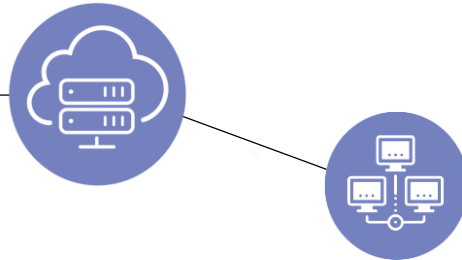
### CAPTURE



#### CAPTURE

- ADT/FTP
- Web portal
- HL7

### STORE



#### STORE

- Electronic completion
- Centralized, HIPAA compliant database
- Patient matching

### ACCESS



#### ACCESS

- Call center
- ED eFax
- Web Portal
- HIE



# But Elements of a Successful, Sustainable Registry Go Beyond Just Technology

---

Successful registries are those that invest in factors critical to success...

- Sustainable funding
  - Multi-year financial commitment
  - Public and private funding
- Marketing and awareness
  - Go-to-market to drive adoption
  - Ongoing efforts
- Stakeholder engagement
  - Importance of advance care planning to all clinicians in all care settings
- Legislative mandates
  - Not necessary but helps facilitate success!

## Lessons Learned from Other States

|  | Idaho | Utah | Washington | Oregon |
|--|-------|------|------------|--------|
| Registry tied to local group or coalition                          | ✓     | ✓    | X          | ✓      |
| Integrated into clinical care application                          | X     | X    | X          | ✓      |
| Mandatory submission of completed forms via supporting legislation | X     | X    | X          | ✓      |
| Easy access to data in emergency settings                          | X     | X    | X          | ✓      |
| Electronic ACP forms   | ✓     | X    | ✓          | ✓      |
| Marketing and awareness  | X     | X    | X          | ✓      |
| Sustainable funding  | X     | X    | X          | ✓      |

# A Look at Some of Our State Registry Partnerships

---

- Oregon
  - Oregon POLST Registry (OPR), Oregon POLST, Oregon Health and Science University (OHSU)
- California
  - Coalition for Compassionate Care of California (CCCC), Emergency Medical Service Authority (EMSA), San Diego Health Connect (SDHC), Alameda-Contra Costa County Medical Association (ACCMA)
- Delaware
  - Delaware Health Information Network, Goals of Care Delaware Program (leads DMOST)
- Louisiana
  - Louisiana Health Care Quality Forum (LHCQF)

# A Deeper Look at Oregon

---

## Oregon POLST Registry (OPR) live since 2009

- Oregonians who died that had a completed POLST form
  - 45% 2015-2016
  - 31% 2010-2011
- When POLST forms had been completed
  - 21 weeks from death 2015-2016
  - 5 weeks from death 2010-2011
  - Alzheimer's and Parkinson patients completed forms earlier
- Opted for more aggressive treatment
  - 13% requested CPR
  - 11% requested full medical treatment