



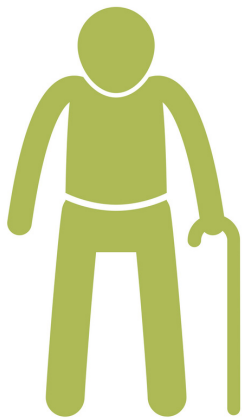
CENTER FOR IMPROVING
VALUE IN HEALTH CARE

Cancer Prevalence in CO

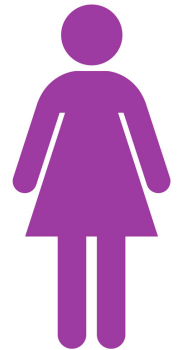
Insights from the Colorado All Payer Claims Database interactive public reports @ www.civhc.org

Overview

Breast cancer is by far the cancer with the **highest prevalence (0.79%)**, followed by prevalence of **cervical cancer (0.21%)**.



The **cancers** reported tend to be **more prevalent** in the **older population (65+ yrs.)**...



...with the exception of **cervical cancer**, which is **more prevalent among women (35-64 yrs.)**.



The **35-64 yrs.** population covered by **Medicare Advantage** has the **highest prevalence of all cancers** reported.*

Cancers tend to be **more prevalent in rural** counties among the **Medicare Advantage** and **Medicaid** populations.



*Populations covered by Medicare Advantage represent individuals with complex conditions and can include those under age 65.

Breast Cancer

0.79% Overall rate across all payers

Trends since 2012

- ↓ Commercial **-29%**
- ↓ Medicaid **-24%**
- ↑ Medicare Advantage **14%**



Urban counties have **higher** rates of breast cancer (0.8%) compared to rural (0.6%).

Cervical Cancer

0.21% Overall rate across all payers

Trends since 2012

- ↓ Commercial **-16%**
- ↓ Medicaid **-17%**
- ↑ Medicare Advantage **25%**



Rural counties have **higher** rates of cervical cancer in the **Medicaid and Medicare Advantage** population.

Colorectal Cancer

0.14% Overall rate across all payers

Trends since 2012

- ↓ Commercial **-8%**
- ↓ Medicaid **-13%**
- ↑ Medicare Advantage **5%**



No apparent variation between rural and urban prevalence for all payers.

Lung Cancer

0.09% Overall rate across all payers

Trends since 2012

- ↓ Commercial **-36%**
- ↓ Medicaid **-25%**
- Medicare Advantage **0%**



Overall prevalence of lung cancer tends to be **higher** in the **older population (65+)**.

To learn more, visit us at:

www.civhc.org/get-data/interactive-data/statewide-metrics/condition-prevalence

This report is based on record of specific diagnoses associated to health care services billed to a third party during a calendar year, as opposed to individuals' self-reported diagnosis.