

**STATE OF MT - RBP INITIATIVE**  
COLORADO BUSINESS GROUP ON HEALTH - JUNE 2018



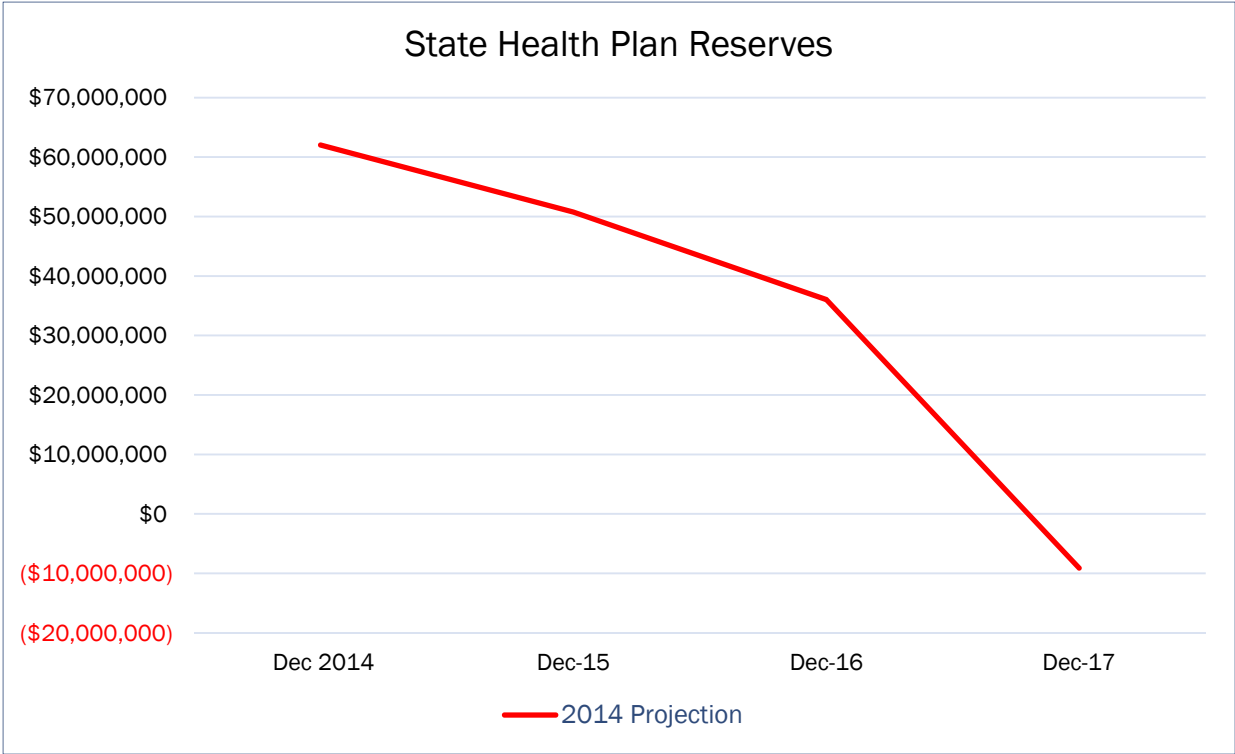
# STATE OF MONTANA EMPLOYEE HEALTH PLAN

- 12,700 Employee Lives; 2,000 Retirees
- 31,000 Total Lives
- Self-Funded Plans for Medical, Dental, RX, Montana Health Centers, Vision
- Largest Self-Funded Plan in Montana

[WWW.BENEFITS.MT.GOV](http://WWW.BENEFITS.MT.GOV)



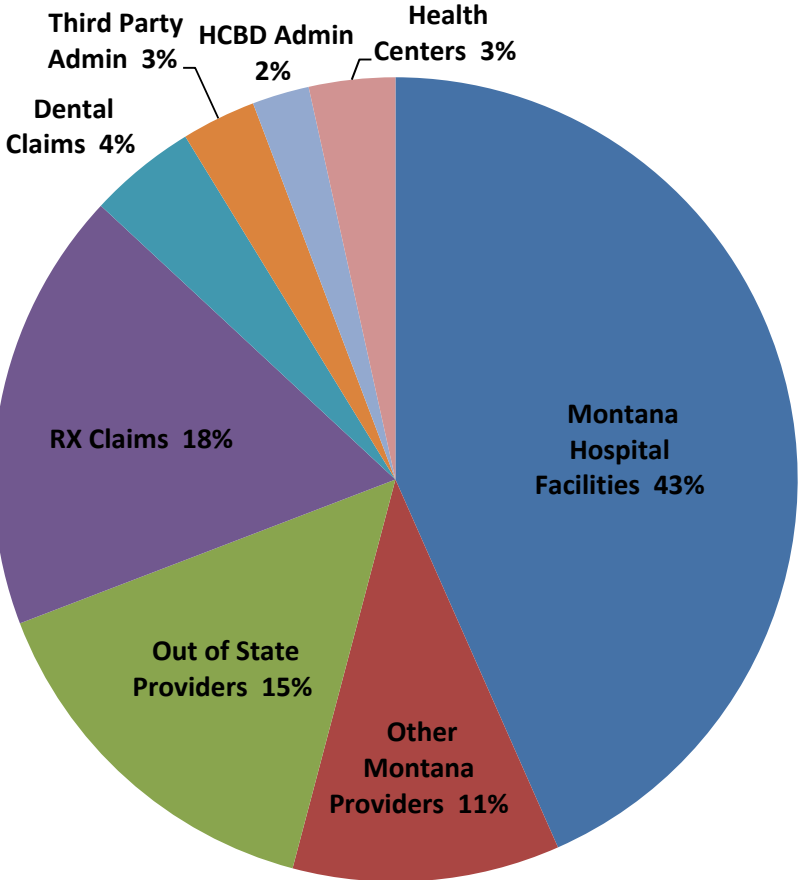
# DECEMBER 2014 TURNING POINT



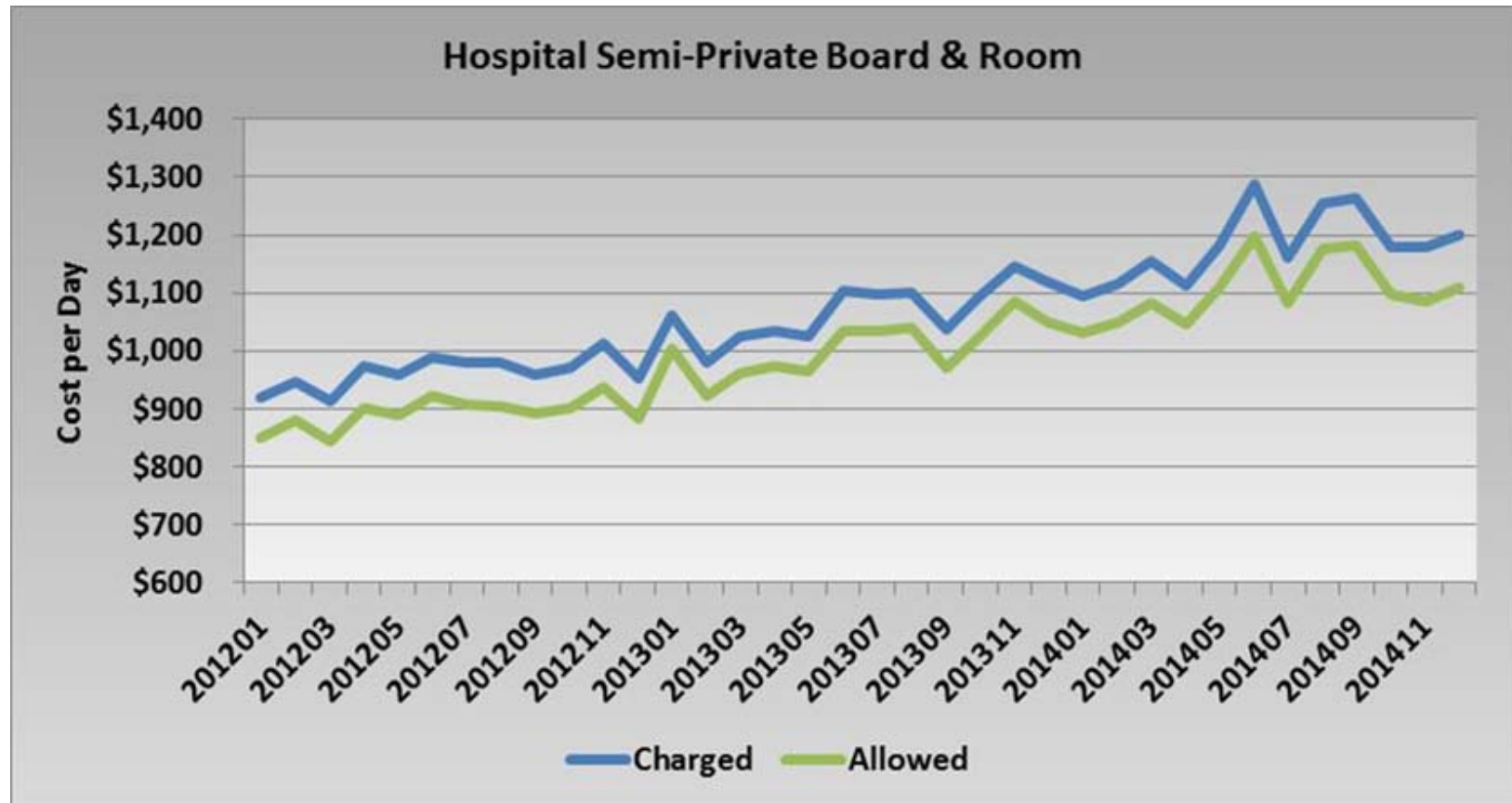
## PRESSURES FROM ALL STAKEHOLDERS

- Montana Legislature – Senate Bill 418
- News Media
- Governor's Office
- Vendors and Providers
- Montana Hospitals
- Pharmacy Product through Purchasing Co-Operative
- Plan Members
- Unions
- Our own staff
- Running out of \$\$\$

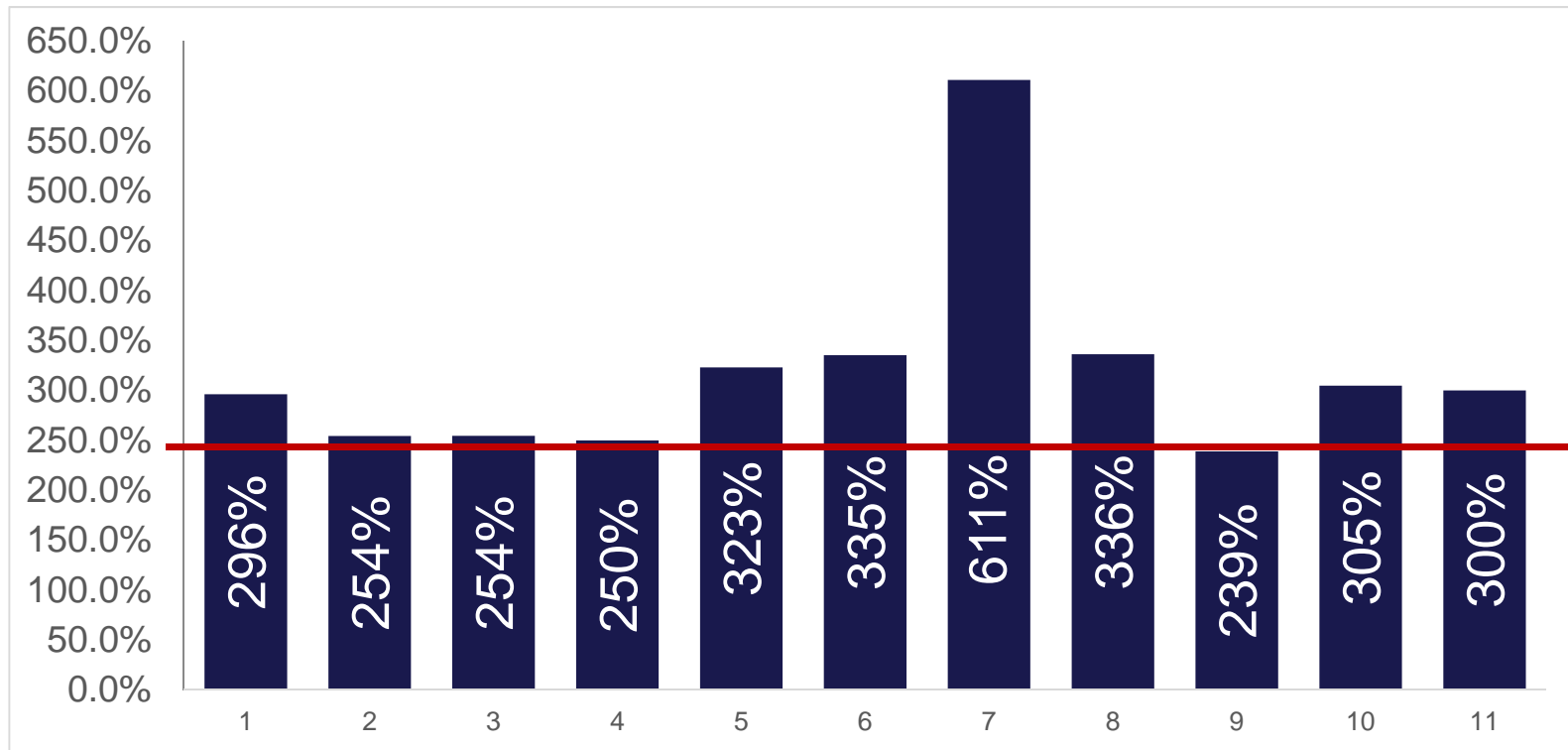
# HOW ARE THE PLAN COSTS DISTRIBUTED?



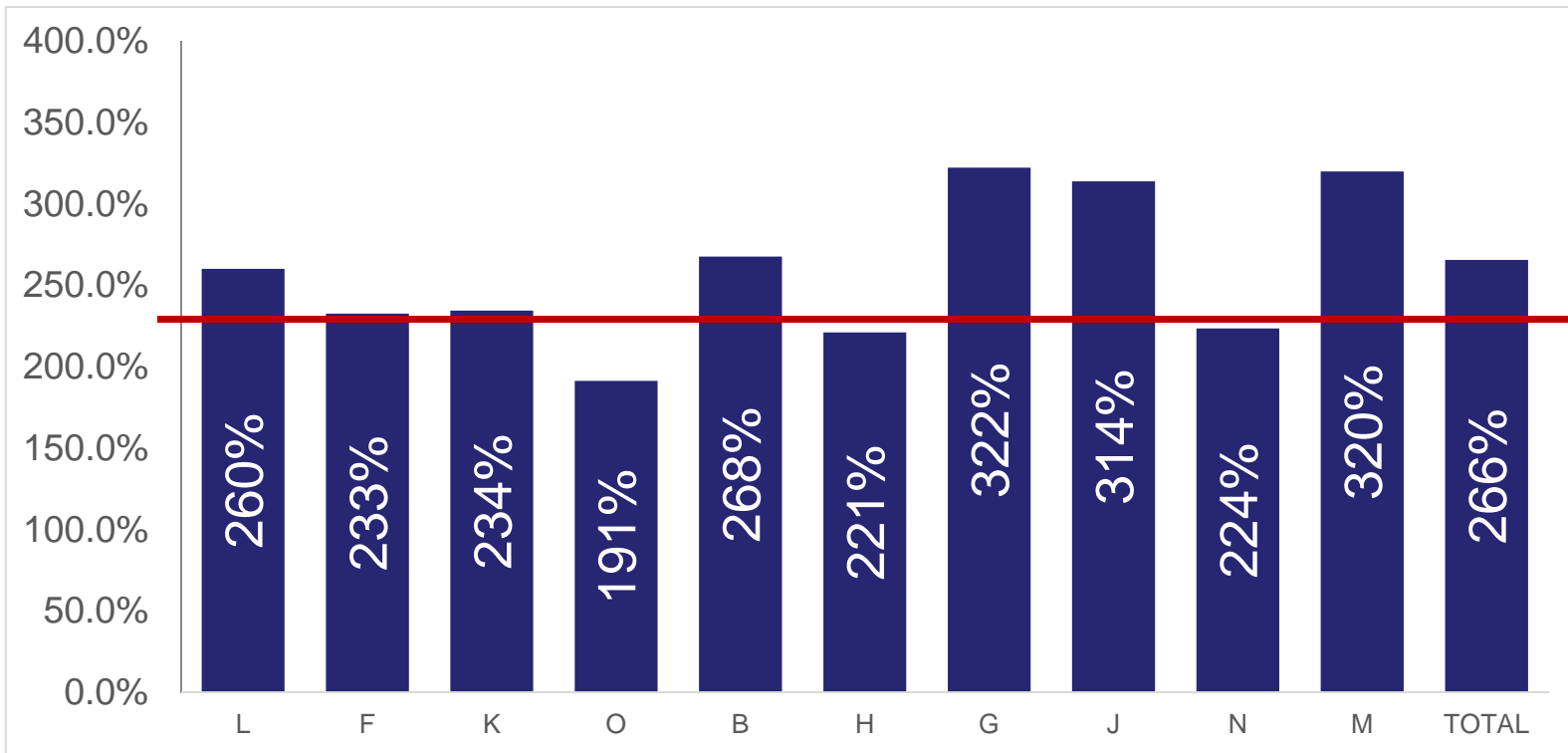
# MONTANA HOSPITALS - CHARGE LESS DISCOUNT



# OUTPATIENT COST COMPARISON

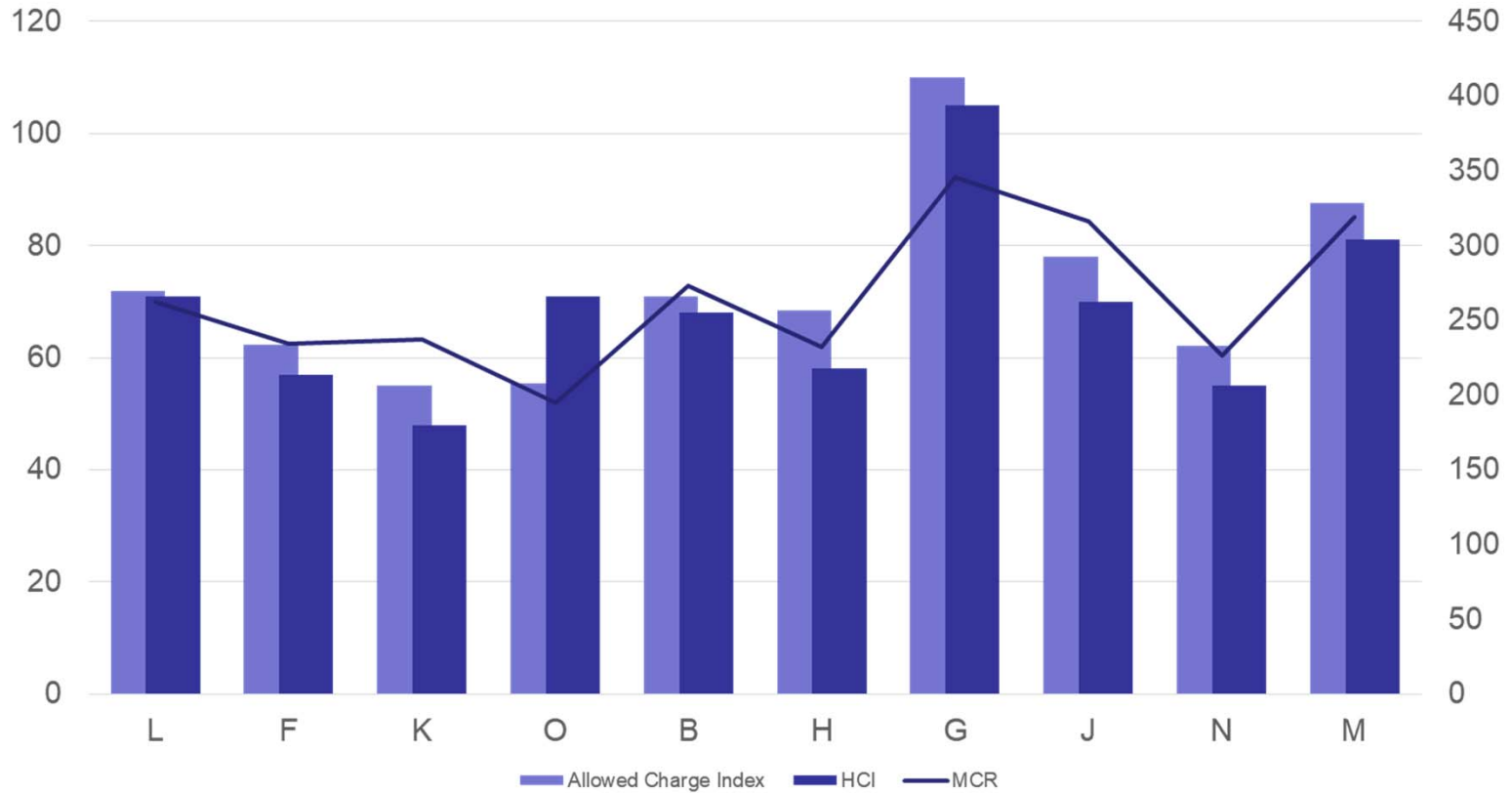


# INPATIENT COST COMPARISON

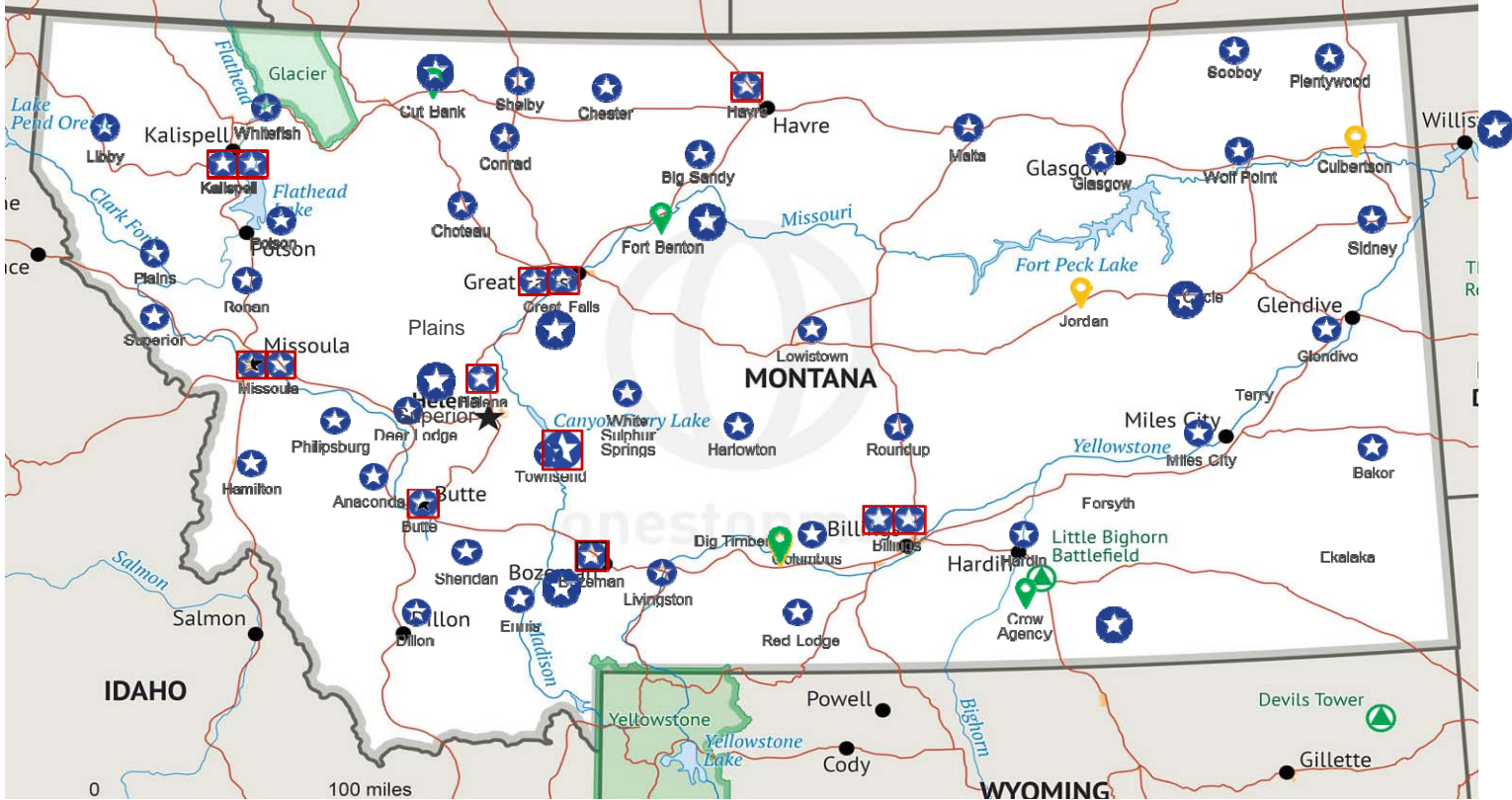




# CLEVERLY & ASSOCIATES



# DISTRIBUTION OF PARTICIPATING PROVIDERS



Signed, PPS

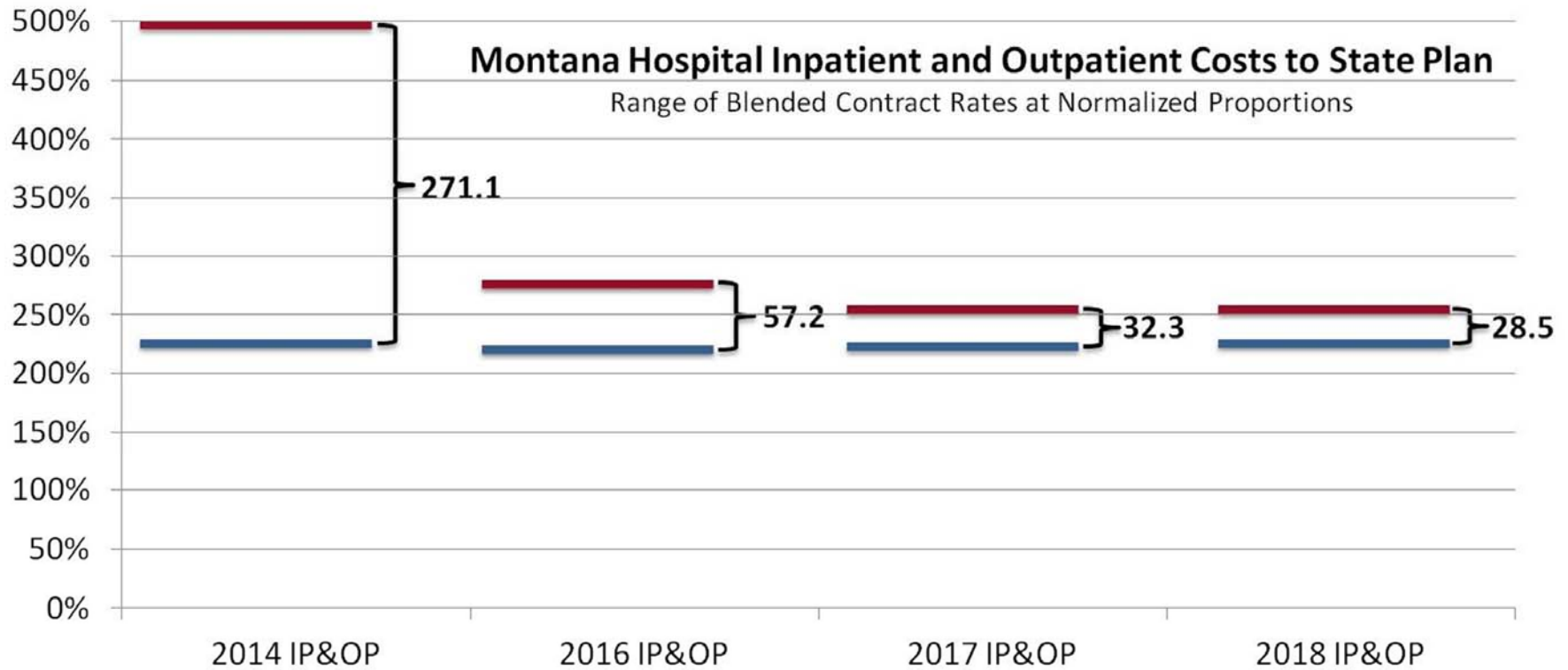


Signed, CAH

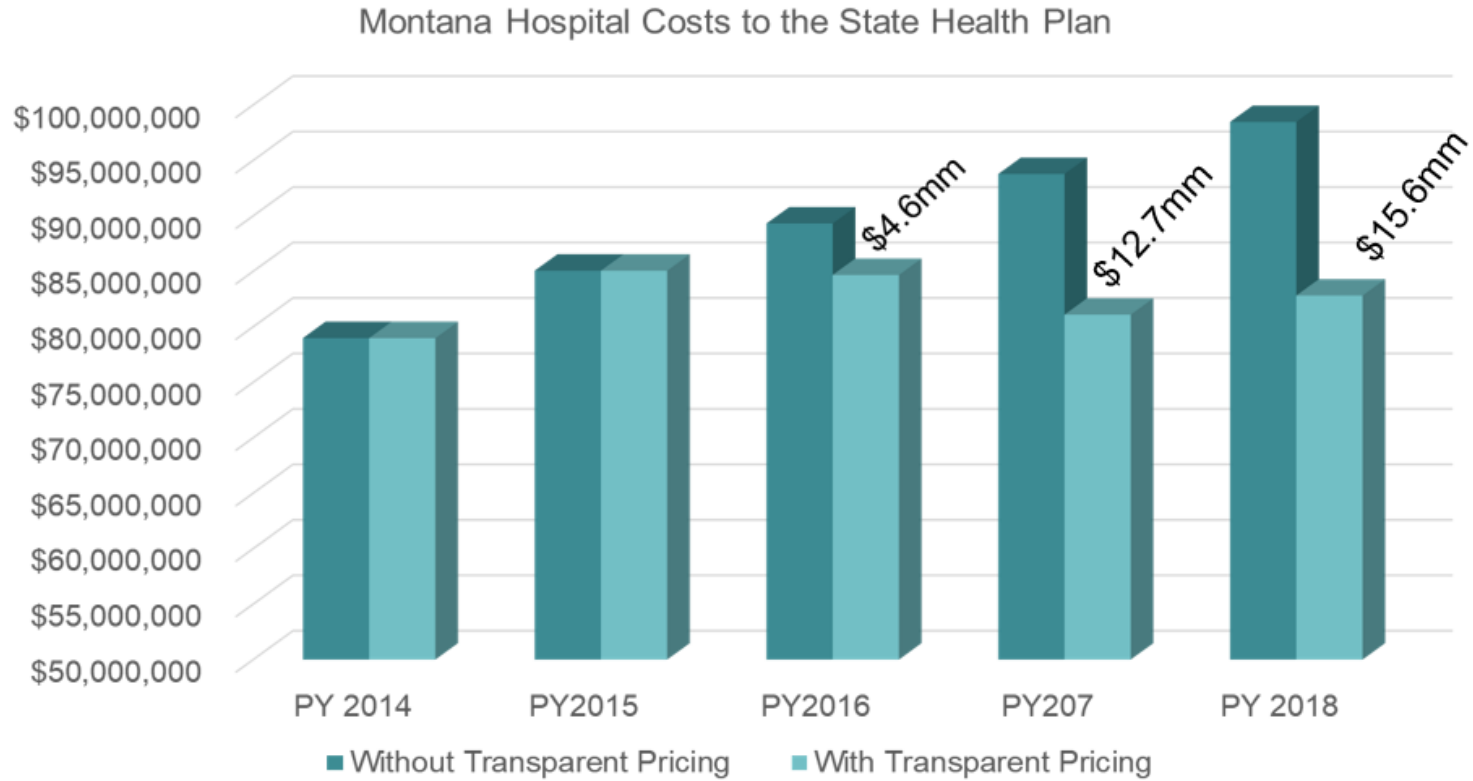


Not Signed, CAH

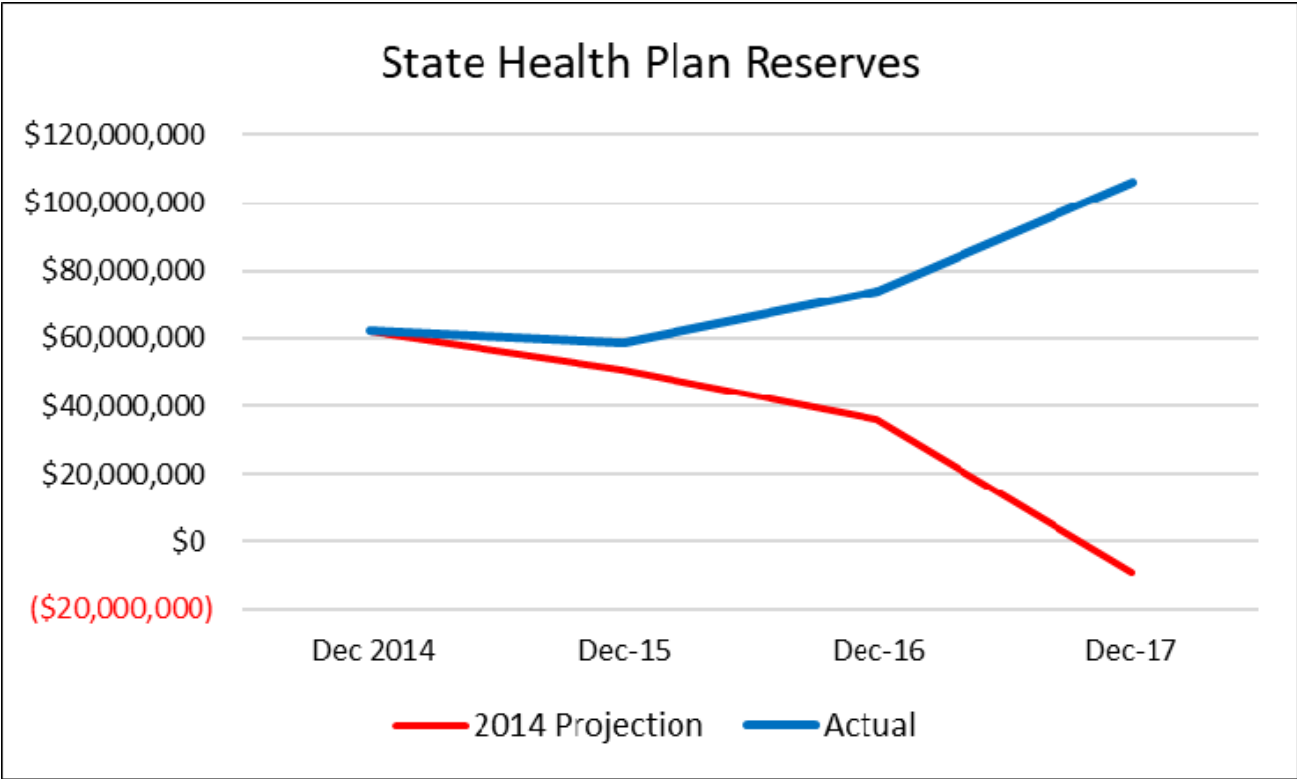
# REFERENCE BASED PRICING



# REFERENCE BASED PRICING PROJECTIONS



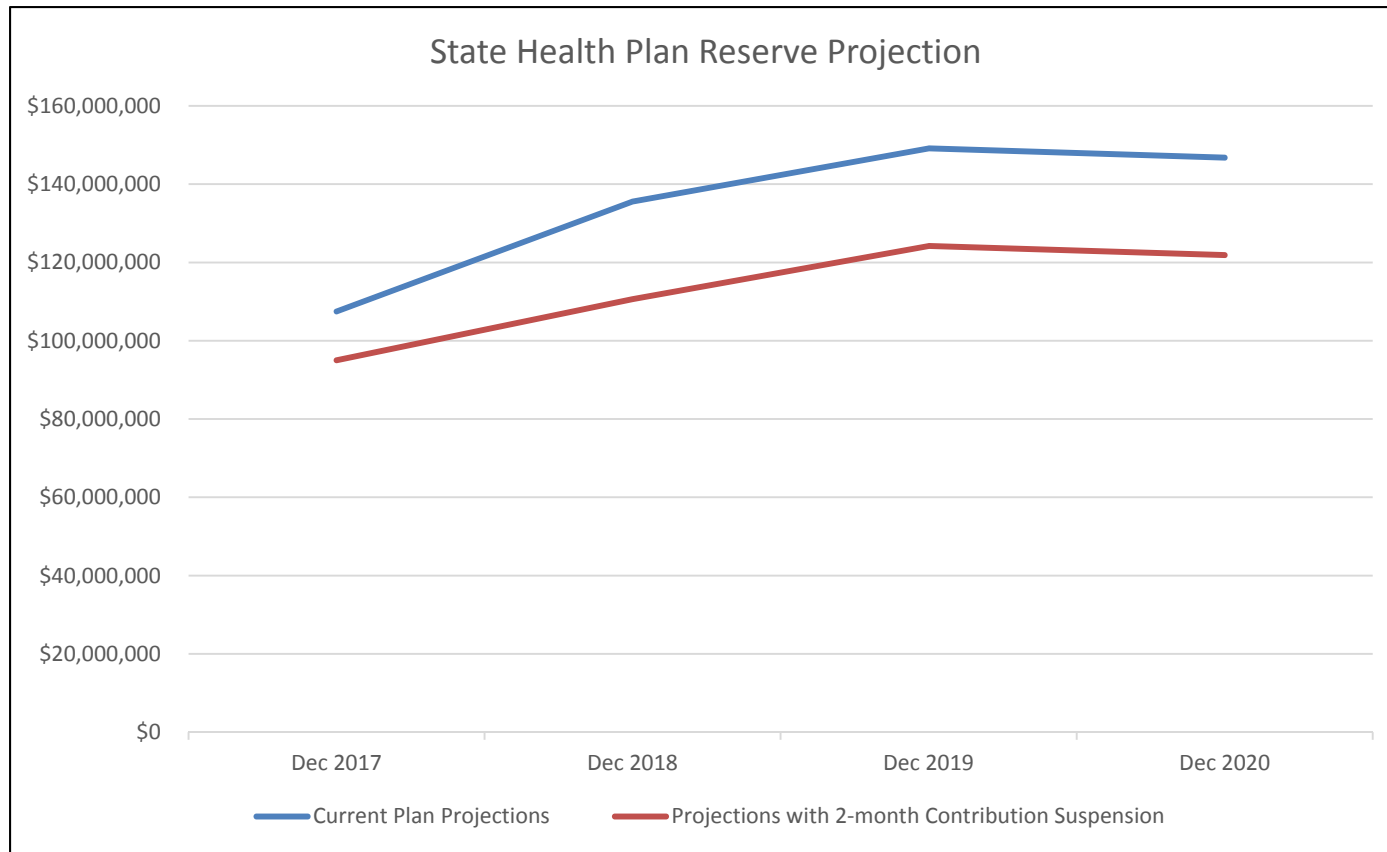
# RESERVE POSITION NOW



## ADDITIONAL EFFORTS

- Transparent Pharmacy Benefit Manager
- Changed TPA
- Benefit Plan Modifications
- Appeals Process Implementation
- On-Site Health Clinics
- 23% Staff Reduction in Benefits Team
- Eliminated Duplicate Programs
- Renegotiated Vendor Fees – 18% to 24% reduction
- Medication Therapy Management Program (Montana Independent Pharmacists and University of MT Pharmacy School)

# PROJECTIONS



**THANK YOU FOR YOUR TIME!**

[WWW.BENEFITS.MT.GOV](http://WWW.BENEFITS.MT.GOV)

